

8th meeting of Graduate College Council Agenda – 27 April 2020, 2pm

Via Zoom (only): recorded

<https://udel.zoom.us/j/92141705619>

Password: 098541

Recording Link: <https://udel.zoom.us/rec/share/991NF5Kq1SROTIGK6FnwBpQNNQ4ruT6a8gHJP-fpZmFtrxd9JLgIpR9E-DOT2kd4>

Recording Password: gccmeet427!

Agenda Item Minutes

1. Call to order – 2:05. Clarification about joining.
 2. Secretary's Report
 - a. Approval of agenda - approved
 - b. Approval of minutes – Rich Braun, ICC slide has four slides to be amended from one slide.
 - i. Approved with thanks to Carol for her effort
 3. Dean's report and questions (Doren)
 - a. Good news: NSF graduate research fellowships – 8 UD graduate students received awards (8x from 2019). Six UD alums in grad school elsewhere got awards. Many also got honorable mention. ~25 students all together.
 - b. Graduate College may hold seminar next fall to help students apply successfully for NSF fellowships.
 - c. Presidential letter to UD community. For commencement, planning is ongoing and a priority. Hooding ceremony is typical, but along with all other commencement activities these are postponed.
 - i. Survey of what would work – not online, not delayed and grouped with next spring or fall.
 - ii. Will do some version of the hooding ceremony.
- COVID-19 Update included**
- d. Call with Research Office about reopening research. Recognizing concerns of graduate students for safety and progress of research.
 - i. Draft out now from committee for reopening research. Phased approach for some activities before others. High priorities first.
 1. Persons close to completing degrees.
 2. Essential activities for experiments and laboratories, longitudinal continuity.
 - ii. Specific measures that determine milestones for phased reopening. Similar to communities. Lots of testing.
 - iii. Response if positive tests are identified. Criteria for modifying research access during a breakout, contact tracing, and preventing spread.
 - e. Newsletter to graduate students 26 April. Will continue. Good channel for communicating.
 - i. Survey: Two-thirds students think they are getting enough information, but 1/3 are not.
 - ii. Frustrations of being remote. Some concerns related to this. Some inadequate internet access and computing support. Some additional accommodations needed, time, etc., with distractions at home.
 - iii. Some concerns from students about additional work from faculty or as TAs. Some students are finding this to be the expectation they are receiving. We can do better

to help programs think about the specific needs and good practices for online mentoring.

- iv. Will do more surveys.
 1. Graduate Council would like results shared in summary
 2. Look for best practices as much as a list of concerns.
 3. What was positive? Depends upon what questions we ask and in what order.
- v. Concerns about graduate student support. Delayed graduation conditions, etc. Graduate College is trying to assess the need for extra support if graduations are delayed. Which are at risk of not having support; hard to tell with broad numbers so far.
 1. Risk is to enrollment, recruitment. May be similar incoming graduate cohort with fewer outgoing graduate students. May or may not come to pass.
 - a. International students will find a harder time. No VISA processing currently. Cannot be supported if not in the US (on campus).
 - b. May mean that available funding is in flux. Many may delay their graduate education, according to one survey.
 2. This relates to Greg Kane's status of recruitment question
 3. Eileen Young question about summer funding and internships. This is included in the summary of concerns Doug is summarizing.
 - a. Summer doctoral fellowship (tentative deadline still; hard deadline could help). The deadline being flexible is not to imply that applications should be delayed.
 4. Karin Silbernagel question about clinical degrees. Those delays seem different. What is being done with regard to these – health sciences related mainly. Concerns of clinical programs are being addressed mainly outside the Graduate College Dean's office. Mainly looking at students on contract as TAs or RAs .
- vi. Recruiting for coming year. Past April 15, numbers currently look similar to last year. Some professional programs take students much later. One concern is that students from other nations cannot take TOEFL or IELTS Exams. No online testing in China. An alternative exam the iTEP is reviewed favorably by ELI faculty, with some concerns; under the circumstances, recommend trying the iTEP. Needs Faculty Senate approval. Looking for Graduate Council approval too.
 1. English proficiency is required for immigration process for student VISAs. Testing needs to be meaningful, rigorous, and related to success in graduate school.
 2. Paul Laux: Is this a pilot? How long would it be in place? Through recruiting season for fall 2020. Then reevaluate it for spring admissions. Adequate security will be one concern, for example.
 3. Siyan Wang: have local schools that use iTEP been contacted? Doug doesn't know.
 4. Does iTEP meet the language skill set needed for being a TA? It meets TOEFL with similar subscores. How that is used to identify fit for TA, Doug doesn't know. Mainly for students who are not going to be TAs.
 - a. Melinda Duncan – a 23 on the SPEAK is critical.
 - b. This is for fall 2020 admissions for departments and does not constrain departments.

- 5. Greg Kane question related to recruiting: dealing with uncertainty, has there been activity for online contingency to present classes. In the event that many international students cannot get here, or if there is a “second wave” disruption from disease.
- 6. Chair called for a vote on whether to endorse this temporary change for Fall 2020. A majority of yes’s were provided endorsing the pilot program.
- vii. Recruiting activities may be modified.
 - 1. Conference and booth will be rented. Will finance travel. October/November so travel may be restored by then.
 - a. Will travel be covered? We would continue to provide support for students who had planned to go to conferences but were canceled. Won’t count against total support for student travel.
 - b. All university affiliated travel is shut down.

2. GEM is specifically for STEM students from underrepresented groups. While the student’s research area can be whatever, GEM will only provide funding to students in STEM degree-granting programs (indicated by a STEM code in the campus system, which is based on US Homeland Security categories). Tentatively in November 2020, will be co-sponsoring a GEM GRAD Lab in Philadelphia event; a training opportunity to help underrepresented minority students learn about graduate school, and prepare for graduate school and funding applications.

- viii. Graduate Dean search was called to a close. Plan was Dean Doren would step down. Now the plan is to perform an internal search, and Dean Doren is still planning to step down when someone is in place.

- 4. Update on Dean Search (Parcells, Watson, Purciello)
 - a. DOREN (repeated): Graduate Dean search was called to a close. Plan was Dean Doren would step down. Now the plan is to perform an internal search, and Dean Doren is still planning to step down when someone is in place.
 - b. See slides for statement sent by search committee. Thanks for Doug’s leadership.
- 5. Standing reports
 - a. Graduate student report – Topics of concern to grad student councilors and others
 - i. COVID-19 related. See above.
 - ii. GSG townhall for each graduate representative to take questions. In May GSG will vote to update bylaws with more formal nomination protocol.
- 6. Committee reports
 - a. Interdisciplinary Curriculum Committee (Braun)
 - i. See slides report.
 - ii. Draft proposal for degree programs to enter Graduate College. Reported on feedback on this.
 - iii. Draft proposals expected for Microbiology and Water Science and Policy.
 - iv. Existing documents and bylaws provide needed information for starting new programs. Need to share administratively for easy finding as needed.
 - b. Graduate Student Life Committee (Griffin)
 - i. See slide.
 - ii. Student concern/question related to an ombudsperson.
 - 1. Resource for graduate student related matters, e.g., problems with advisor, research group, etc.

- iii. Need for uniformity in graduate student policy documents to ensure they are legally sound, clear, shared with faculty advisors.
- iv. Internships, tuition, international fellowships – working that issue currently.
- v. Desire for mental health intervention training for program directors. Amy Griffin attended an online course available, shared the slides. Mental health issues need to go through the Center for Counseling and Student Development.
 - 1. Faculty can contact the Center – there is an after-hours contact too.
 - 2. Services still in place. Only remaining concern is licensure issues working “across state lines” now that we are remote (telehealth). Working these issues for local resources.
 - 3. <https://sites.udel.edu/counseling/>
 - 4. How to identify a student in online/remote environment who may need help. (Notice a difference in engagement, could be a sign.)
 - a. Donald Watson: Students present with some crisis (depression, etc., suicidal), and response directing them to Center may be not enough. Calling directly is sometimes received with passive wait for them to arrive.
 - b. When students are not on campus, this is more difficult. Getting Center to engage can be challenging in a remote environment.
 - c. Eileen: Lots care, but the hotline has not always responded receptively to a call from a non-suicidal stressed graduate student.
 - d. Amy Griffin response: there was some push back from counseling center that we faculty should not triage a mental health crisis. Looking for a better way to express these concerns. Some suggestion that at other university there was a “coach” in the Dean of Students office serving as a counselor without a degree (added position or role), who is the person to talk to for graduate students.
 - e. Nicole – put resources in place so they don’t get to the point of crisis. Perhaps like what Amy suggested.
 - f. Lots more open discussion. Notes suspended. Please see recording.
- c. Update on Awards and Fellowships Committee
 - i.
- 7. College Liaison Reports
 - a. Health Sciences: Jennifer Horney
 - i. See slides report.
 - b. Activities across Colleges that relate to Grad College mission
- 8. New business
 - a. Elections – New members to be selected by May 15th. Each delegation nominate a member for the Executive Committee. Executive Committee to be filled by June 1st.
 - b. No new business introduced by Councilors
- 9. Adjourned at 3:53 pm.

Graduate Council Faculty Representatives (* indicates member of Executive Committee)

College	Representative	Alternate	Attended (Y/N)		
			April 27, 2020 mtg		
Agriculture and Natural Resources					
	Mark Parcells *	TBD	Y		
	Shree Inambdar	TBD			
Art & Sciences					
	Melinda Duncan	Erica Selva	Y		
	Don Watson	Andrew Teplyakov	Y		
	Richard Braun	Petr Plechac	Y		
	John Xiao	Federica Bianco	Y		
	Siobhan Carroll	Will select in the fall	Y		
	Alexander Selimov	Gladys Ilarregui	Y		
	Greg Dobler	Danilo Yanich	Y		
	Amy Griffin	JP Laurenceau	Y		
	Gretchen Bauer	Jenny Lambe	Y		
		Pascha Bueno-Hansen			
	Vimalin Rujivacharakul		Y		
	Owen White	Tom Powers	Y		
	Ann Bell *	Belinda Orzada			
	Maria Anne Purciello	Ashley Pigford	Y		
	Nigel Caplan	Michael Fields	Y		
Earth Ocean and Environment					
	Clara Chan	Saleem Ali			
	James Corbett *	Saleem Ali	Y		
Education and Human Development					
	Danielle Ford *	TBD	Y		
	Bridgette Johnson	TBD			
Engineering					
	Julie Maresca	Li Liao	Y		
	Joshua Zide *	Herbert Tanner	Y		
	Ryan Zurakowski	Anthony Beris	Y		
	Gonzalo Arce		Y		
	Arthi Jayaraman		Y		
	Chris Kloxin				
Health Sciences					
	Freda Patterson	TBD			
	Karin Silbernagel	TBD	Y		
	Regina Wright	TBD	Y		
	Diane Chugani *	TBD	Y		

Lerner College of Business and Economics					
	Greg Kane *	TBD	Y		
	Suresh Sundaraman	TBD	Y		
	Siyang Wang	TBD			
	Paul Laux	TBD	Y		
	Sri Beldona	TBD			
Professional and Continuing Studies					
	George Irvine	Aviva Heyn	Y	Y	
Ex Officio (non-voting)					
	Doug Doren		Y		
	Charlie Riordan		Y		
Graduate Student Representatives					
	Shiyun Yao		Y		
	Eileen Young		Y		
	Nicole Rucker *		Y		
	Di Liu		Y		
	Ioannis Vasileios Chremos *		Y		
	Andrew Kuczarski **		Y		
	Stanley Ayodeji Ohikhuemeh		Y		
Graduate College Staff					
	Mary Martin		Y		
	Suprawee Tepsuporn		Y		
	LaRuth McAfee		Y		
	Carol Steinbrecher		Y		
	Caitlin Hutchison		Y		

Graduate Council Student Representatives (* indicates voting councilor; ** indicates member of Executive Committee and voting councilor)

College	Representative	Department			Alternate	Department	
		t Affiliation	First Electec	Term Expires		t Affiliation	Term Expires
Agriculture and Natural Resoruces	Shiyun Yao		2019	2020	syyao@udel.edu		TBD
Arts & Sciecnes	Eileen Young		2019	2020	efyoung@udel.edu		TBD
Earth Ocean & Environment	Nicole Rucker *		2019	2020	mnrucker@udel.edu		TBD
Education & Human Development	Di Liu		2019	2020	diliu@udel.edu		TBD
Engineering	Ioannis Vasileios Chremos *		2019	2020	ichremos@udel.edu		TBD
Health Sciences	Andrew Kuczmariski **		2019	2020	avk@udel.edu		TBD
Lerner College	Stanley Ayodeji Ohikhuemeh		2019	2020	stanayo@udel.edu		TBD

Grad College Council

8th Meeting (via Zoom)

27 April 2020

Notes

- Everyone is set to Mute on Join. If you wish to speak, you will need to unmute yourself. Please keep yourself muted when you are not speaking.
- We will vote using the **Yes/No** buttons in the 'Participants' view window. Please locate that now.
- You can use the **Raise Hand** button to get the chair's attention.

Via Zoom (only):

<https://udel.zoom.us/j/92141705619>

Password: 098541

Agenda

<u>Agenda Item</u>	<u>Estimated Time</u>
1. Call to order	1 minute
2. Secretary's Report	2 minutes
a. Approval of agenda	
b. Approval of minutes	
3. Dean's report and questions (Doren)	15 minutes
a. COVID-19 update included	
4. Update on Dean Search (Parcells, Watson, Purciello)	3 minutes
a. See statement below.	
5. Standing reports	
a. Graduate student report – Topics of concern to grad student councilors and others	3 minutes
6. Committee reports	
a. Interdisciplinary Curriculum Committee (Braun)	5 minutes
b. Graduate Student Life Committee (Griffin)	5 minutes
c. Update on Awards and Fellowships Committee	3 minutes
7. College Liaison Reports	
a. Health Sciences – Jennifer Horney	5 minutes
b. Activities across Colleges that relate to Grad College mission	2 minutes
8. New business	
a. Elections – Council Members (elected by Colleges) by May 15; Exec. Council nominations (by delegations) to follow soon after	2 minutes
b. Introduction of new business by Councilors	1 minute
9. Adjourn	1 minute

Call to Order / Secretary's Report

- Approval of agenda
- Approval of minutes

Dean's Report and Questions

- COVID 19 update included

Update/Discussion on Dean Search

- Parcels, Watson, Purciello

Statement on Graduate College Dean Search

At a meeting with the Graduate College Dean Search Committee, the Provost informed the committee that two of the short-listed candidates had withdrawn from consideration (Dr. Michele Marcolongo and Dr. Pero Dagbovie). In addition, given the financial implications of Covid-19 on the University of Delaware and the lack of a clearly-mandated candidate from the search committee, the Provost has suspended the search at this time. The Provost stated that a future search will be conducted for this position once the University is fully operational and in better financial footing for supporting this important inaugural Dean position.

Standing Reports

- Graduate Student Report – Topics of concerns to grad student councilors

Committee Report: Interdisciplinary Curriculum Committee (Braun)

Committee Report: Interdisciplinary Curriculum Committee (ICC)



- The ICC met on Friday April 24 virtually.
- The ICC completed its membership and welcomed a new member from CEHD: Laura Desimone (desimone@udel.edu)
- She has joint appointment in Education and in the Biden School
- Interested in forming interdisciplinary PdD with both Education Policy and Social Policy components
- The second agenda item was discussing advice for forming this degree: the items reflected those listed in surveys of programs.

Committee Report: Graduate Student Life (Griffin)

Graduate Student Life Committee report April 27, 2020

- Is there funding to hire an ombudsperson at the graduate college or dean of students office? Students feel that they need someone who could be a resource specifically for graduate student related matters (e.g., problems with advisor or within a research group).
- There is a need for uniformity in department graduate student policy documents to ensure they are legally sound and clearly convey policies to students and faculty advisors (e.g., vacation time, number of hours of work per week).

Also: Mental Health Intervention Training for Graduate Program Directors,
suggested by Don Watson in March, referred to GSL Committee

Committee Update: Awards and Fellowships

- The Graduate College Council Committee on Awards and Fellowships shall be responsible for:
 - (1) making recommendations to the Council for approval of suggested policies and guidelines for awards and fellowships, and
 - (2) helping to recruit reviewers for applications.

The committee shall consist of 7-10 faculty members appointed by the College Council. The membership of the committee should have expertise that reflects the broad diversity of academic disciplines that offer graduate degrees at the University of Delaware.

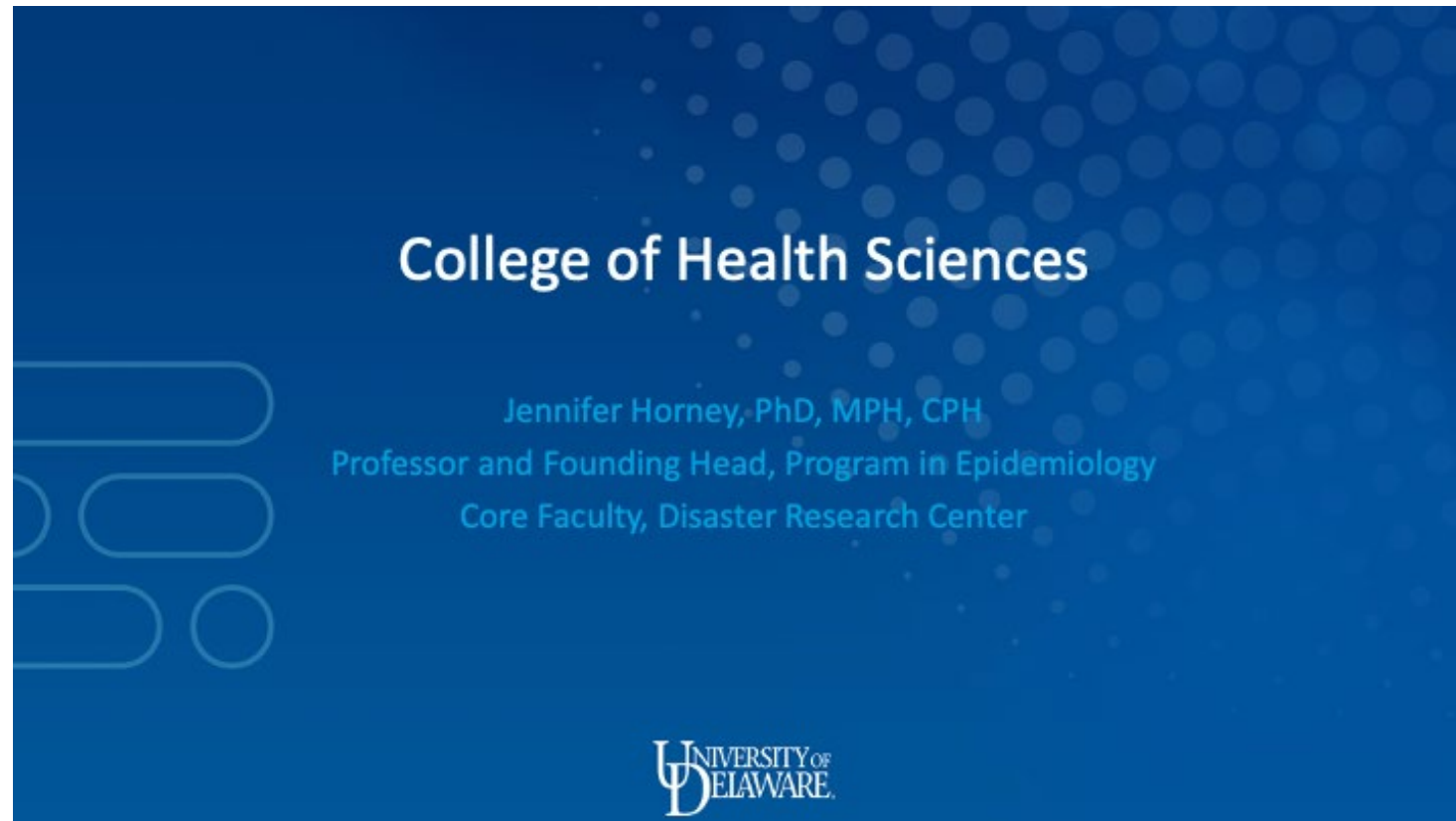
- Approved in January; hoping to charge the committee soon.
- Current volunteers:
 - Pascha Bueno-Hansen (CAS, Women and Gender Studies)
 - Don Watson (Chemistry)
 - Evan Unsler (Communication Science and Disorders)
 - Erica Selva (Biology)
 - Karen Silbernagel (Physical Therapy)
 - (Possible) Federica Bianco (Physics and Astronomy)
 - **More members still needed** (“reflecting the broad diversity of academic disciplines...”)
 - High impact service: make sure the way fellowships are handled works for your field.

College Liaison Reports

- College's programs and how the Grad College can help:
 - Raise overall grad education profile/importance/excellence
 - Share info about growing strong interdisciplinary programs
- Today – Health Sciences
- Future presentation
 - 5/18: Lerner College of Business and Economics
- Activities across the Colleges that relate to Grad College Mission

College Report: College of Health Sciences

- Jennifer Horney



Activities across Colleges that related to Grad College Mission

- Anyone have anything new?

New Business: Elections

- Each College needs to elect its new members by May 15.
 - Executive Committee members have been charged with coordinating with College leadership
- Once new members are elected, each delegation should "meet" to nominate a member for the Executive Committee soonafter
- The (current) Executive Committee recommends that the full Council vote to **ratify** the nominations of each delegation
 - Alternative is the *full* council selecting an Executive Committee member from *each* College per bylaws. (i.e. CHS has a vote on who the CEOE delegate is).
- Per bylaws, the Executive Committee members must be selected/approved by June 1.

Introduction of New Business

- All Councilors have the right to introduce new business

Closing business

- Timing of next meeting
 - Monday, May 18, 3pm (Zoom-only or Zoom-option, as appropriate)
- Adjourn

College of Health Sciences

Jennifer Horney, PhD, MPH, CPH

Professor and Founding Head, Program in Epidemiology

Core Faculty, Disaster Research Center

Graduate Program Priorities

- 7 Departments / Programs
 - Behavioral Health and Nutrition, Kinesiology and Applied Physiology, Medical and Molecular Sciences, School of Nursing, Physical Therapy, Communication Sciences and Disorders, and Epidemiology
- 16 graduate programs
 - Clinical and research based; professional programs



Graduate Programs

- Recruitment and Marketing
 - Surveyed all program directors for priorities (e.g., growth, diversity)
 - Met with OCM to learn about opportunities for focused recruitment (e.g., data science)
- Biostatistics and Research Methods
 - Compiled courses taken by students in last 5 years
- Graduate Student Mental Health
- Expanding Research Ethics Training for Graduate Students



Questions?

Jennifer A. Horney, PhD, MPH, CPH

Professor and Founding Director, Program in
Epidemiology, College of Health Sciences

Core Faculty, Disaster Research Center

University of Delaware

horney@udel.edu

udel.edu/mph-epi





Graduate Student Life Committee report

April 27, 2020

- Is there funding to hire an ombudsperson at the graduate college or dean of students office? Students feel that they need someone who could be a resource specifically for graduate student related matters (e.g., problems with advisor or within a research group).
- There is a need for uniformity in department graduate student policy documents to ensure they are legally sound and clearly convey policies to students and faculty advisors (e.g., vacation time, number of hours of work per week).

Committee Report: Interdisciplinary Curriculum Committee (ICC)



- The ICC met on Friday April 24 virtually.
- The ICC completed its membership and welcomed a new member from CEHD: Laura Desimone (desimone@udel.edu)
- She has joint appointment in Education and in the Biden School
- Interested in forming interdisciplinary PdD with both Education Policy and Social Policy components
- The second agenda item was discussing advice for forming this degree: the items reflected those listed in surveys of programs.

ICC Report



- Third agenda item: discuss draft proposals for degree programs to enter GC
- One drafted for MS in Data Science; components included
 - Staff salary and benefits
 - Directors: summer salary and benefits, course buyouts
 - Other support such as expenses, travel, events, etc
- Some concerns were expressed:
 - No revenue projection was included
 - Sharing of staff minimally addressed
 - Budgeting for these costs
 - No PhD issues addressed (e.g., RA/TA contracts, etc)
- Revision will continue
- Draft proposals expected: Microbiology; Water Science and Policy; ...

ICC Report

- Fourth agenda item was “Do we need to develop a document for helping to start new programs?”
 - Templates are available via previous Program Policy Statements
 - Surveys of programs give advice
 - Bylaws outline what is needed
- Conclusion was no, but make these easy to find in this context on Graduate College web page
- Last item was where to put these items; seen to be a detailed admin item, and deal with outside of committee